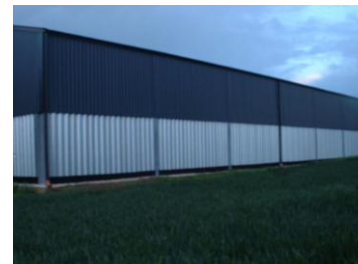
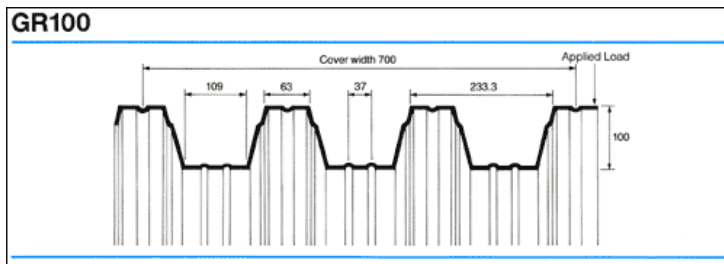
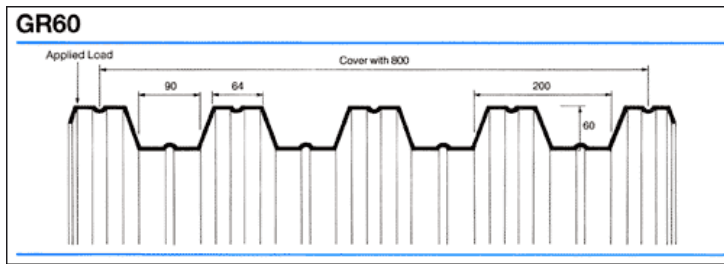


## Grainwalling



Steel grainwalling has proved to be one of the most lasting and versatile solutions for creating on the floor storage for cereals and root crops. It can be fitted as part of a new build and is also ideal for converting existing buildings for crop storage.

### Main features

This product is uncomplicated. With a choice of gauge and profiles with stiffening ribs, orders can be tailored to your exact requirement. It's easy to work with and is most commonly fitted vertically but can be used horizontally too.

### How is it made?

Grainwalling is roll formed in the same way as single skin sheeting, starting with a coil of steel which is processed through a rollforming machine, pressing in the troughs, profiles and stiffening ribs to giving strength and then cutting the panel to length. The deeper the profile, the narrower cover of sheet.

### Which Profile?

There are two main profiles of 60mm and 100mm and they are available in 3 gauges. How much storage you want achieve and the constraints of the building will dictate which profile and thickness we recommend for your project. We do not design support steelwork, but can advise on the supports required for level fill and surcharge storage.

### What about cost?

#### Factors affecting price are:

Profile and gauge	Quantity required
Quality (seconds with slight paint blemishes are available)	Delivery address
Length if very long lengths are required	Stock availability

### Colours and Coatings

It goes without saying that an uncoated finish is cheaper than a coated one, and that's the main reason that grainwalling is usually supplied in a 'galv' or zinc coated finish. Some gauges can be supplied in a range of plastic coated finishes, although for most agricultural situations, functionality and price usually take precedence over an aesthetically pleasing look! Take a look at the [colour chart](#) to see standard plastic coated finishes.

### How long from order to delivery or collection?

Generally speaking lead-time for prime material is 10 to 15 working days from order to delivery, although this can become extended at busy times. If you're looking to buy seconds quality, it just depends what we have in stock that's suitable for your project but delivery should be within 5 to 10 days. Collection of orders from our yard can speed things up considerably.

## Grainwalling

### Not sure what you're going need for your project?

Coming from a farming background, we're used to dealing with farmers, especially those who are looking for a good deal! Listed below are the items which might be needed to complete your grainwalling scheme - you may only need some of them but you will need to have thought about whether you need them all or not! We can talk you through the project and can deliver any of these products or the whole package if you want us to.

- [Metal sheeting \(for above grainwalling\)](#)
- [Capping and finish flashings](#)
- [Tec screws](#)
- [Foam fillers](#)
- Guttering ([plastic](#) and [made-to-measure](#) metals are both available)

### FIXING NOTES

With over thirty years' experience, here are some of the tricks of the trade, which will save you both time and frustration when fixing grainwalling:-

- We do not design steelwork, but will advise of where intermediate support need to be placed.
- Calculations for the type of panel required must not be exceeded.
- Nearly all grainwalling we supply is fitted vertically.
- The bottom 150mm of the grainwalling panel should be embedded into the concrete.
- Paint 150mm above and 150mm below the concrete level with a bituminous paint.
- Always use a [self-tapping tec screws](#) designed for the type of support you're fixing into.
- Fix overlapping sheets with stitcher tecs.
- We make cappings, closures and finishing to your spec.
- Always store 'Galv' or zinc coated finished products somewhere dry.
- All site H&S procedures, manual handling and risk assessments should be adhered to.

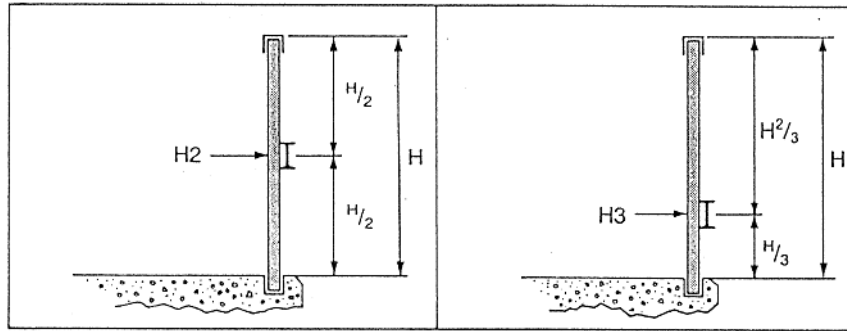
The table below shows spans of grainwalling for the storage of wheat. All figures are given for guidance only. H2 and H3 refer to additional supports as detailed in the image below. If grain stirrers are used, reduce spans by half.

GR60 Level Fill				
		Single span	Single Support at H3	Single Support at H2
Panel Thickness	0.70mm	2.480	3.415	3.524
	0.90mm	2.715	3.925	4.040
	1.20mm	3.003	4.521	4.640
GR60 Max Surcharge Fill				
		Single span	Single Support at H3	Single Support at H2
Panel Thickness	0.70mm	2.039	2.716	2.808
	0.90mm	2.232	3.142	3.239
	1.20mm	2.469	3.644	3.745
GR100 Level Fill				
		Single span	Single Support at H3	Single Support at H2
Panel Thickness	0.70mm	2.981	4.031	4.164
	0.90mm	3.260	4.696	4.832
	1.20mm	3.606	5.420	5.563
GR100 Max Surcharge Fill				
		Single span	Single Support at H3	Single Support at H2
Panel Thickness	0.70mm	2.039	2.716	2.808
	0.90mm	2.232	3.142	3.239
	1.20mm	2.469	3.644	3.745

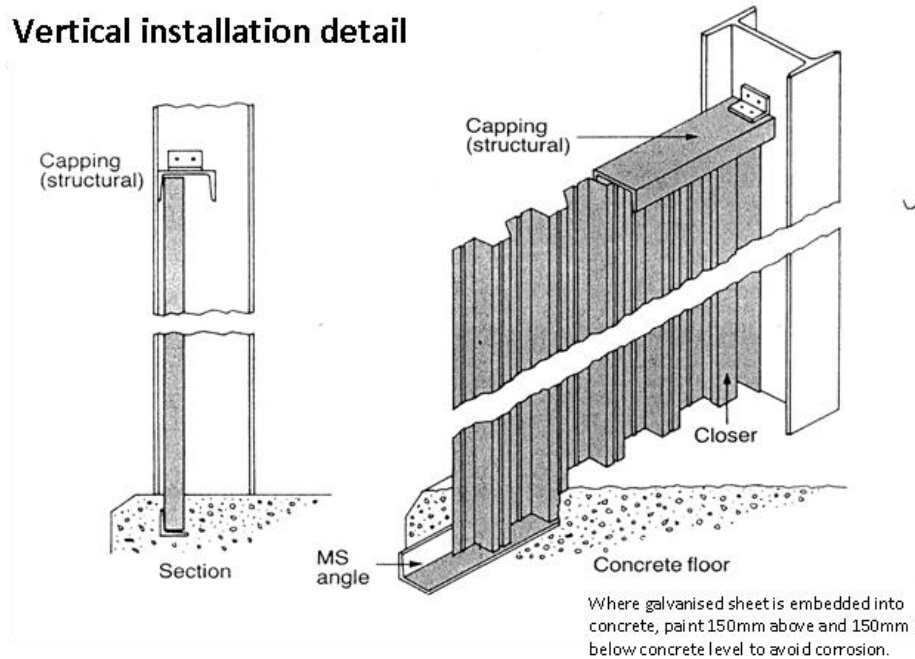
## Grainwalling

Installation notes for vertical panels:

Detail showing panel with additional supports at H2 and H3 to which the span table refers.



### Vertical installation detail



Your notes: